



# La Mercerie

AT THE GUILD



## PÉTILLANT BY THE GLASS

|  |    |
|--|----|
| VOUVRAY BRUT 'TROGLODYTE' <i>Alain Robert NV</i>                                   | 18 |
| ROSÉ PETILLANT NATUREL 'ÉXILÉ' <i>Lise &amp; Bertrand Jousset 2021</i>             | 20 |
| CHAMPAGNE BRUT BLANC DE BLANCS 'SÉLECTION BELLES ANNEÉS' <i>Pierre Gimmonet NV</i> | 32 |
| CHAMPAGNE 'BRUT ROSÉ' <i>Veuve Clicquot NV</i>                                     | 34 |

## BLANC BY THE GLASS

|  |    |
|--|----|
| MUSCADET SEVRE-ET-MAINE SUR LIE 'ORTHOGNEISS' <i>Domaine de l'Ecu 2020</i> | 18 |
| SANCERRE <i>Joel et Jean Luc Raimbault 2022</i>                            | 25 |
| BORDEAUX BLANC 'RESERVE' <i>Michel Lynch 2022</i>                          | 20 |
| CHABLIS <i>Agnes &amp; Didier Dauvissat 2022</i>                           | 26 |

## ORANGE BY THE GLASS

|  |    |
|--|----|
| VIN DE FRANCE 'SGU CONTACT' <i>Vivanterre 2021</i> | 24 |
|--|----|

## ROSÉ BY THE GLASS

|   |    |
|---|----|
| CÔTES-DE-PROVENCE 'LES CROIX' <i>Château Peyrassol 2023</i> | 22 |
|---|----|

## ROUGE BY THE GLASS

|   |    |
|---|----|
| CROZES-HERMITAGE 'CERTITUDE' <i>Domaine Francois Villard 2020</i> | 24 |
| MONTAGNE SAINT ÉMILION <i>Vieux Château Saint André 2019</i>      | 23 |
| CHEVERNY 'LES CLOS DES CARTERIES' <i>Christian Venier 2022</i>    | 18 |
| BOURGOGNE ROUGE <i>Maison Pierre Brisset 2019</i>                 | 29 |

À

B  
O  
I  
R  
E

## COCKTAILS

|  |    |
|--|----|
| PETIT PARIS<br><i>aperol, sparkling wine, grapefruit</i>         | 19 |
| LA VOLEE<br><i>vodka, pear, ginger, lime</i>                     | 17 |
| BELLE DE JOUR<br><i>mezcal, wild cherry, pomegranate shrub</i>   | 19 |
| JOLIE GINNY<br><i>Neversink gin, blanc vermouth, suze, tonic</i> | 17 |
| LA SUAVE<br><i>rye whiskey, Chartreuse jaune, Benedictine</i>    | 19 |

## BIÈRE & CIDRE

|  |    |
|--|----|
| KRONENBOURG '1664'<br><i>Strasbourg, France</i>                  | 11 |
| BRASSERIE DE LA<br>PIGEONELLE 'LOIRETTE'<br><i>Loire, France</i> | 16 |
| AVAL CIDRE<br><i>Bretagne, France</i>                            | 15 |

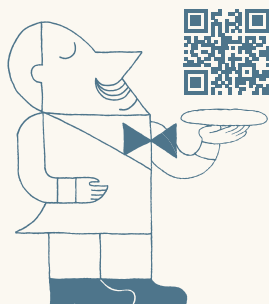
## COFFEE & ESPRESSO

|             |   |
|-------------|---|
| DRIP COFFEE | 6 |
| ESPRESSO    | 7 |
| MACCHIATO   | 7 |
| CAPPUCCINO  | 8 |
| LATTE       | 8 |

## TEA

|  |   |
|--|---|
| TURMERIC WELLNESS<br><i>turmeric, rosemary, ginger, black pepper, citrus peel</i>          | 9 |
| ASSAM CHAI<br><i>assam tea, cardamom, ginger, rose, cinnamon, black pepper, peppermint</i> | 9 |
| GENMAICHA<br><i>kagoshima prefecture, japan</i>  | 9 |
| MOUNTAIN BEAUTY<br><i>yunnan province, china</i>   | 9 |

FRESH MINT TEA FOR TWO 12



## SHOP the OBJECTS on YOUR TABLE

SCAN HERE AND TAKE IT HOME:  
All of the tableware at La Mercerie produced by global  
artisans is available to purchase at RW Guild.

## NON-ALCOHOLIC

|  |    |
|--|----|
| '53'<br><i>pomegranate, lime, honey</i>                        | 15 |
| FLUETTE<br><i>ginger, beet juice, lemon</i>                    | 15 |
| FRANÇOISE<br><i>seasonal shrub, lemon, soda</i>                | 15 |
| ERIC BORDELET 'POMME PERLANT'<br><i>Normandie, France 2022</i> | 15 |
| NOUGHTY SPARKLING CHARDONNAY                                   | 15 |